



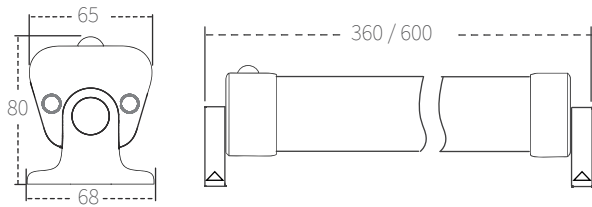
Change the way you see the solar light

# SOLAR LED BATTEN LIGHTS



# SOLMATE

## SOLAR BATTEN LIGHT KIT



SOLMATE Solar LED batten light is specially designed for retail & distribution market. Can be widely used in many applications, such as office, home, garage, caravan, carports, bus stations, warehouses, camping tents, farm tents, sidewalks & alleyways, emergency camps, aid tents, caves, or many kinds of temporary or permanent accommodation structures, etc. Solar LED batten light is a kit that contains everything - rechargeable lithium battery, solar controller, and solar panel. Easy installation in less than 5 minutes; It provides a high brightness level over a long period of time, continuous lighting output, and built-in PIR sensor to save power if sunshine is not strong enough.

This solar LED batten light also supports working during day time while being charged- under manual operation. By programming the remote control, you can increase or decrease the brightness as you wish; there are 2, 4 and 6 hour settings available. One 5V USB output is included to charge a mobile phone. It is a perfect lighting solution for remote areas, that lack either power or fixed lighting.

# Key Feature



Extension to Wall Switch  
Light can be ON/OFF like a regular light by wall mounted switch, easy to use



Long light work  
Up to 12 hours working.  
Continuous lighting output.



USB Output  
Backup to charge mobile, useful in emergency.



IP65 Waterproof  
Can be widely used in outdoors, never worry water leaks in.



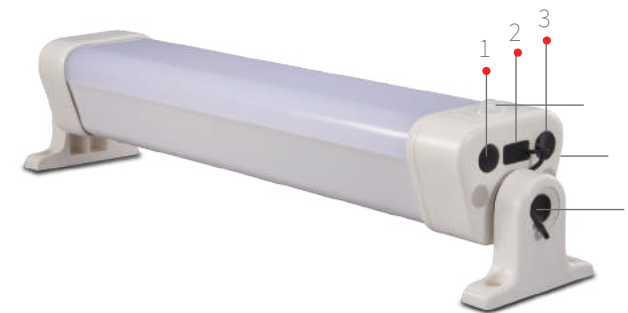
PIR Sensor  
Motion sensor function is available to save more energy



## Wall Switch

With this extension wall switch, the light can be ON/OFF easily as needed like traditional 220V light. It is functional both for day time or night,

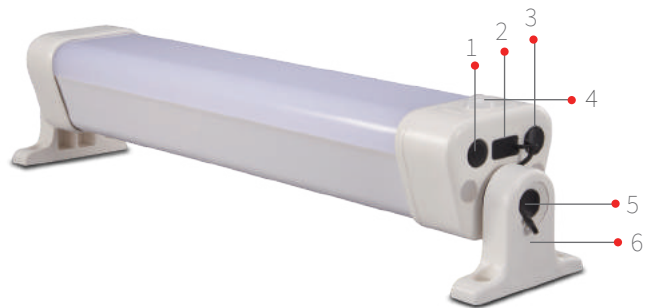
It is an ideal answer to offer lighting service to the remote areas where there is no electricity or space where there is no light even



- 1 : Push Switch
- 2 : USB Output
- 3 : Connector to external switch

- 4 : Motion (PIR) Sensor
- 5 : Solar Panel Input
- 6 : Adjustable Light Brackets

# Specification



- 1 : Push Switch
- 2 : USB Output
- 3 : Connector to external switch
- 4 : Motion (PIR) Sensor
- 5 : Solar Panel Input
- 6 : Adjustable Light Brackets

# Installation & Marketing



Model name	E360	E600
LED peak power	12W	24W
Luminous flux	1,500lm max	2,400lm max
Color temperature	3000K / 4000k / 6000K	3000K / 4000K / 6000K
Dimension	360*65*80mm	600*65*80mm
Solar panel	10W 6V mono	18W 6V mono
Lithium battery	3.7V 8.8AH	3.7V 17.6AH
Housing material	Polycarbonate + aluminium	
Charge & discharge time	5 hours / 24 hours	
Working temp.	-20°C ~60°C	
Motion sensor	PIR sensor	
USB output	5V 1A max	
IP rate	IP65	
Cable length	5 meters / customzied	
Warranty	2 years	
Certificates	CE ROHS	



Technical Collaboration with Truelite USA & MR.AURORAS China

**AURORAS INNOTECH (GUANGDONG) CO., LTD**

[www.truelite.us](http://www.truelite.us) [www.auroraslighting.com](http://www.auroraslighting.com)

Telephone : +86 0756-8530887 8530371

0760 86687850 86687851

Email : [Sales09@auroraslighting.com](mailto:Sales09@auroraslighting.com)

Address : 2/F, B# Bldg, 1# Dongcheng Rd, SanXiang,  
GuangDong Post Code 528463 CHINA